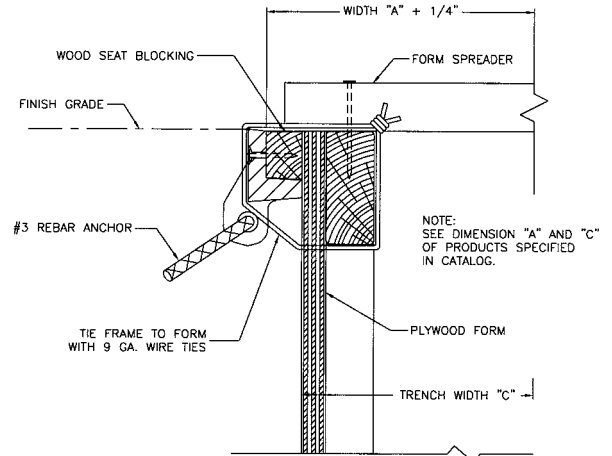


## Suggested trench grate

# forming procedures

### STANDARD TRENCH GRATE

Pour and finish trench bottom concrete to proper depth and slope and allow curing time. After the bottom has cured, begin erecting the trench form. For properly fitted grates, the form must be plumb, level, and straight. The width of the trench must correspond to the outside edge of the form. This width corresponds to dimension "C" in the catalog and on the Standard Trench Frame Forming drawing. The height of the form will determine the finished grade elevation of the installed grates. Extend the spreader beyond the edge of the form to provide a stop for the wood seat blocking. The wood seat blocking is nailed to the form and the cast iron frame is nailed to the wood seat blocking using the bolts in the face of the frame. The cast iron frame and wood seat blocking are then secured with 9 gauge tie wire. The frames should be butted together to leave as little gap as possible. Place at least eight inches of bent #3 rebar through the anchor lug holes to provide anchorage to the concrete. The frames should be spaced according to the catalog dimension "A" plus 1/4 inch. Trench side frames are not designed to be bolted to each other. The concrete for the trench side walls may then be poured. Once the concrete has cured, complete installation by stripping all forming material and tie wires.



### BOLTED TRENCH GRATE

Forming of bolted trench grate assemblies requires a different procedure from the forming of non-bolted trench grate. The bolted grates are shipped assembled to the frame. These units should not be disassembled during installation. Pour and finish trench bottom concrete to proper depth and slope and allow curing time. After the bottom has cured, begin erecting the trench form. For properly fitted grates, the form must be plumb, level, and straight. The width of the trench must correspond to the outside edge of the form. This width corresponds to dimension "C" in the catalog and on the Standard Trench Frame Forming drawing. The height of the form will determine the finished grade elevation of the installed grates. The frame and grate units should be butted together to leave as little gap as possible. Bolted trench grate assemblies may change during shipping and handling. Make sure the side frames are spaced according to dimension "A" plus 1/4" as illustrated. The frame and grate units are then secured with 9 gauge wire tied to the forming brace. Place at least eight inches of bent #3 rebar through the anchor lug holes to provide anchorage to the concrete. The concrete for the trench side walls may then be poured. Once the concrete has cured, complete installation by stripping all forming material and tie wires.

