

# 6900Z1/6905M2 DI ASSEMBLY

PRODUCT NUMBER

**00690506**

DESIGN FEATURES

MATERIALS

GRATE-DUCTILE IRON  
ASTM A536  
FRAME-GRAY IRON  
ASTM A48 CL35B

DESIGN LOAD

EXTRA HEAVY DUTY

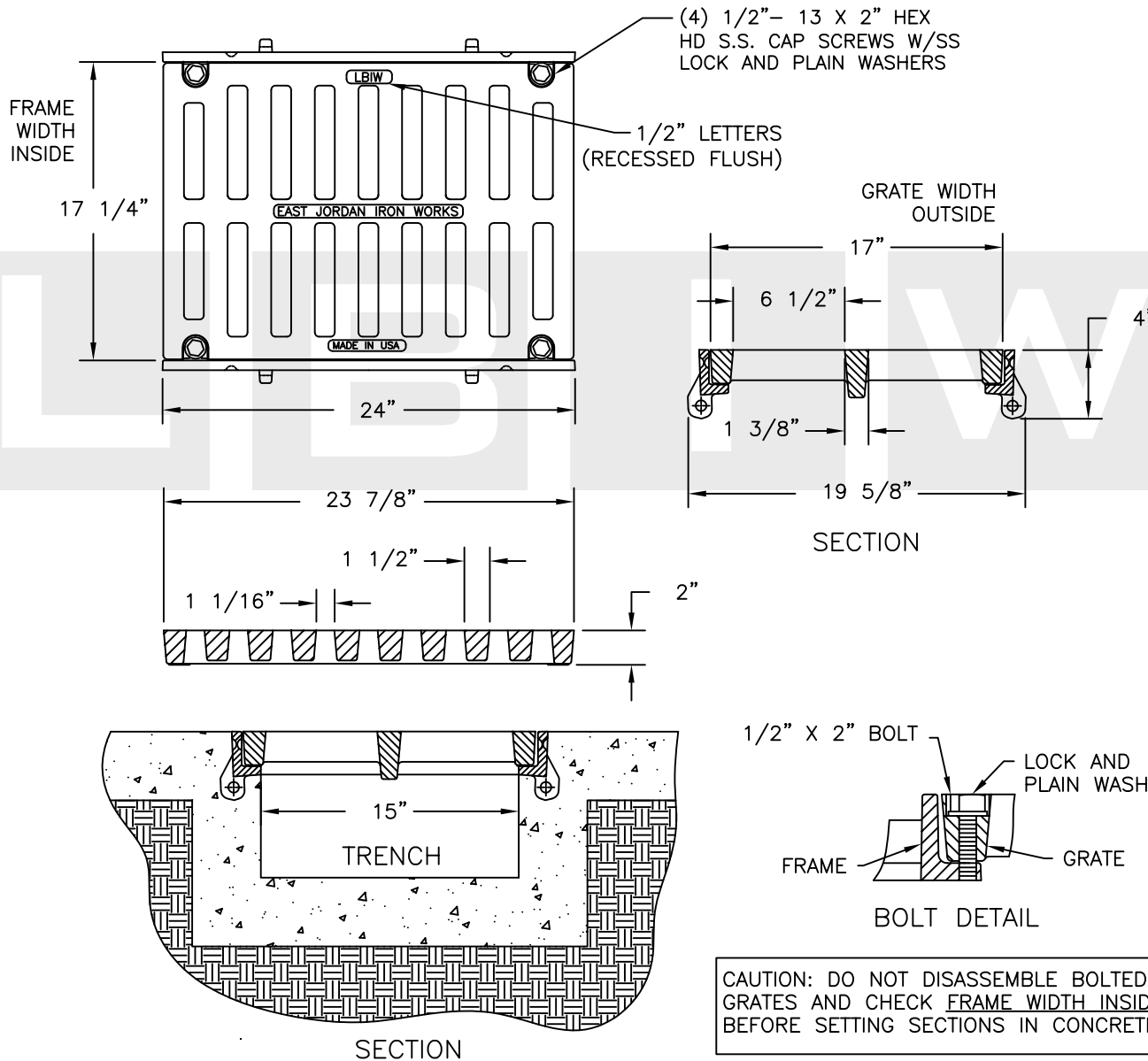
COATING

UNDIPPED

OPEN AREA

132 SQ IN

√ DESIGNATES MACHINED SURFACE



CAUTION: DO NOT DISASSEMBLE BOLTED GRATES AND CHECK FRAME WIDTH INSIDE BEFORE SETTING SECTIONS IN CONCRETE.

Corporate Headquarters  
301 Spring Street  
PO Box 439  
East Jordan, MI  
49727-0439  
800.874.4100



Call Today for  
More Information

800.626.4653

**EJIW EAST JORDAN**  
IRON WORKS EST. 1883  
WE COVER YOUR INFRASTRUCTURE

www.ejiw.com  
MADE IN THE USA

- Weights (lbs./kg.), dimensions (inches/mm.), and drawings provided for your guidance.
- We reserve the right to modify specifications without prior notice.
- Uncontrolled distribution.

CONFIDENTIAL: This drawing is the property of East Jordan Iron works, Inc., and embodies confidential information, registered marks, trade secret information, and/or know how that is the property of East Jordan Iron Works, Inc. ©Copyright 2009 East Jordan Iron Works, Inc.

REFERENCE INFORMATION

00690023  
00690547

DRAWING DETAILS

ORIGINAL DRAWING: DEW 03/29/05

REVISED BY: SMM 02/02/11